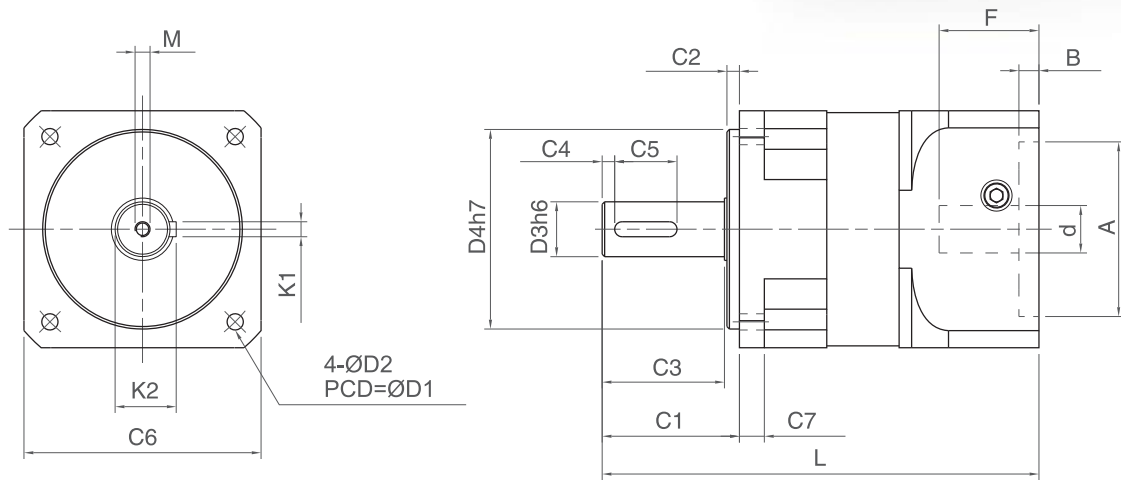


**ALL-PURPOSE, THROUGH HOLE**

# DHseries

PHT VERTEX PRECISION COMPONENTS CORP.



Unit: mm

Info.	DH042	DH060	DH080	DH090	DH120	DH150
D1	50.0	70.0	90.0	105.0	130.0	165.0
D2	4.20	5.20	6.50	6.50	8.50	10.5
D3	12.0	16 (12~16)	20	20 (18~22)	32 (24~35)	42 (38~45)
D4	35.0	50.0	70.0	80.0	110.0	130.0
C1	24.0	35.0	56.0	55.0	58.0	74.0
C2	4.00	7.00	6.00	5.00	5.00	4.00
C3	20.0	27.0	49.0	49.0	52.0	67.0
C4	3.00	3.00	5.00	5.00	5.00	5.00
C5	12.0	20.0	25.0	25.0	40.0	45.0
C6	42.0	62.0	79.0	95.0	115.0	145.0
C7	8.00	9.6	16.0	10.0	19.0	23.5
L	L1	95.0	118.0	169.0	170.3	262.0
	L2	109.0	137.0	194.5	198.5	314.0
M	M4 x P0.7 x 8	M4 x P0.7 x 15	M6 x P1.0 x 20	M6 x P1.0 x 20	M8 x P1.25 x 27	M12 x P1.75 x 32
K1	4.00	5.00	6.00	6.00	10.0	12.0
K2	13.50	18.0	22.5	22.5	35.1	45.0
d	≤ 8.0	≤ 14.0	≤ 24.0	≤ 24.0	≤ 28.0	≤ 42.0
A	20~30	30~50	50~80	50~80	55~110	95~130
B	4.00	6.00	6.00	8.00	5.00	10.0
F	≤ 25.0	≤ 32.0	≤ 35.0	≤ 40.0	≤ 47.5	≤ 66.5

Information	Stage	Ratio	DH042	DH060	DH080	DH090	DH120	DH150
<b>Defined Output Torque (Nm)</b>	1	3	-	40	115	140	260	476
		4	35	60	135	168	306	560
		5	34	55	126	155	292	536
		7	30	50	132	166	285	520
		10	18	40	115	140	260	476
	2	9	-	40	115	140	260	476
		12	-	40	115	140	260	476
		15	-	40	115	140	260	476
		16	35	60	135	168	306	560
		20	34	55	126	155	292	536
		21	-	40	115	140	260	476
		25	34	55	126	155	292	536
		28	30	50	132	166	285	520
		30	-	40	115	140	260	476
		35	30	50	132	166	285	520
		40	18	40	115	140	260	476
		50	18	40	115	140	260	476
		70	18	40	115	140	260	476
	3	100	34	55	126	155	292	536
	<b>Peak Output Torque (Nm)</b>	1, 2, 3	3~100	<b>3 times of Defined Output Torque</b>				
<b>Backlash (arc min)</b>	1	3~10	≤ 10	≤ 10	≤ 10	≤ 10	≤ 10	≤ 10
	2	9~70	≤ 12	≤ 12	≤ 12	≤ 12	≤ 12	≤ 12
<b>Defined Input Speed (RPM)</b>	1	3, 4, 5	3300	3300	3000	2600	2300	2200
		7, 10	4000	4000	3300	2900	2700	2700
	2	9~40	4400	4400	3500	3200	3000	3000
		50	4800	4800	4000	3600	3300	3200
		70	5500	5500	4700	4200	3900	3500
<b>Weight (kg)</b>	1	3~10	0.40	1.30	2.30	3.50	6.00	16.0
	2	9~70	0.50	1.60	3.30	4.50	7.20	20.0
<b>Torsional Rigidity (Nm/arc min)</b>	1, 2	3~70	5.00	7.00	8.00	11.00	27.00	48.0
<b>Allowable Radial Force (N)</b>			365	840	1600	6000	7500	14000
<b>Allowable Axial Force (N)</b>			305	605	1400	5000	6450	12000
<b>Noise (dB)</b>			65	65	64	64	64	64
<b>Life Time (hrs)</b>			20000					
<b>Temperature (°C)</b>	-15°C~+90°C							
<b>Protection Rank</b>	IP64							
<b>Lubricant</b>	Synthetic Lubricant, ISO VG220							
<b>Mass Moments of Inertia (kg X cm<sup>2</sup>)</b>	1	3	-	0.31	0.35	0.40	5.90	10.50
		4	0.30	0.30	0.33	0.60	5.09	9.10
		5	0.29	0.29	0.33	0.59	4.93	8.85
		7	0.28	0.28	0.31	0.58	4.83	8.85
		10	0.27	0.27	0.31	0.57	4.81	8.46
	2	9	-	0.29	0.30	0.56	4.91	9.02
		12	-	0.30	0.30	0.58	5.10	9.01
		16	0.30	0.30	0.30	0.60	5.09	9.01
		20	0.30	0.30	0.30	0.60	5.07	9.02
		25	0.29	0.29	0.30	0.59	4.91	8.83
		28	0.30	0.30	0.30	0.59	5.07	9.01
		35	0.30	0.30	0.30	0.58	4.91	8.82
		40	0.27	0.27	0.30	0.56	4.80	8.45
		50	0.27	0.27	0.30	0.56	4.80	8.45
		70	0.27	0.27	0.30	0.56	4.80	8.45
	3	100	0.27	0.27	0.30	0.56	4.80	8.45